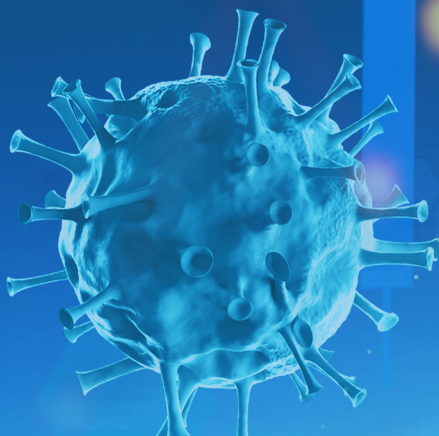


Common Market for  
Eastern and Southern Africa



COVID-19 PANDEMIC REMAINS A CHALLENGE IN THE REGION



# COVID-19

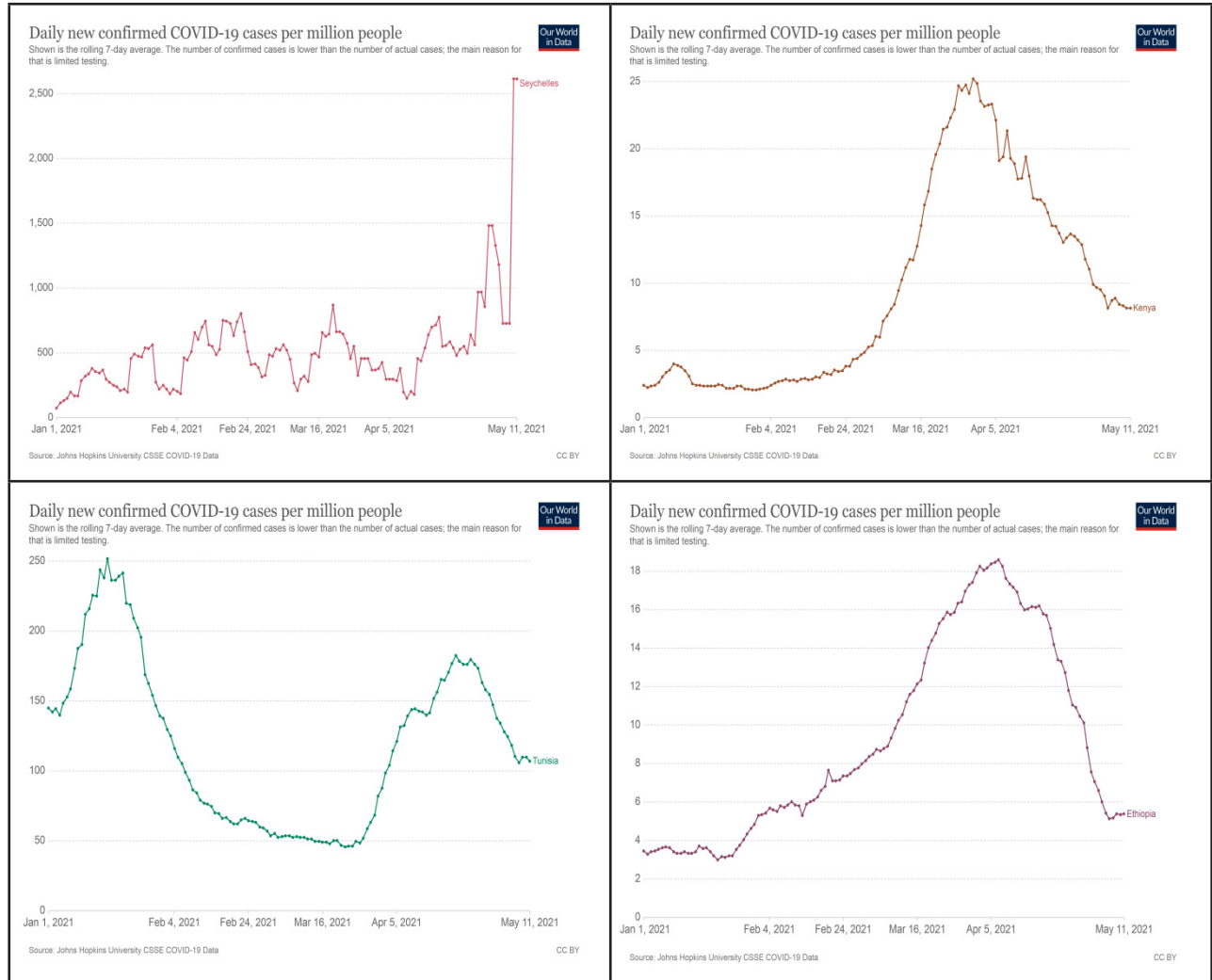
in **COMESA**  
Situational Update N°44

12<sup>th</sup> May 2021



The COMESA region has continued to experience the impact of the COVID-19 pandemic which has led to most economic activities such as manufacturing, agriculture, transport and tourism being adversely affected. Governments have continued to review and reinstate various measures to contain the surge and reduce the impact of the halted or slowed down production facilities. In the recent past, some Member States have already experienced the second, third and fourth wave of COVID-19 outbreaks. As most of the countries in the eastern and southern Africa region will be experiencing the cold season, from June to August 2021, the COVID numbers are expected to rise.

So far, the region has recorded a total number of 1,573,742 cases which constitutes 33.55 percent of the total cases recorded in Africa (4,690,298). On the other hand, the numbers of recoveries and deaths currently stand at 1,318,877 (83.9%) and 45,918, respectively. A number of countries in the region have already experienced the new surge which prompted some of them to reinstate some of the measures that they had initially lifted. For instance, in April 2021, Kenya had to reintroduce lockdowns in five Counties (Nairobi, Machakos, Kajiado, Kiambu and Nakuru). In May 2021, Seychelles also closed schools, cancelled sporting activities, reintroduced closure of bars as infections surged. Tunisia and Ethiopia also experienced surges in the month of April 2021.

**Figure 1: COVID-19 Surges in Ethiopia, Kenya, Seychelles and Tunisia****Measures put in place by Member States to contain the Pandemic**

Despite the recorded surges, Member States in the region have continued to institute various measures to

contain the spread of the pandemic. These include preventive measures such as testing and tracing, wearing of masks in public, social distancing, prohibition of social gatherings, curfews, among others. In addition, some countries have introduced mandatory quarantine at government- approved facilities and travelers are expected to have a negative COVID test result done through a Polymerase Chain Reaction (PCR) test.

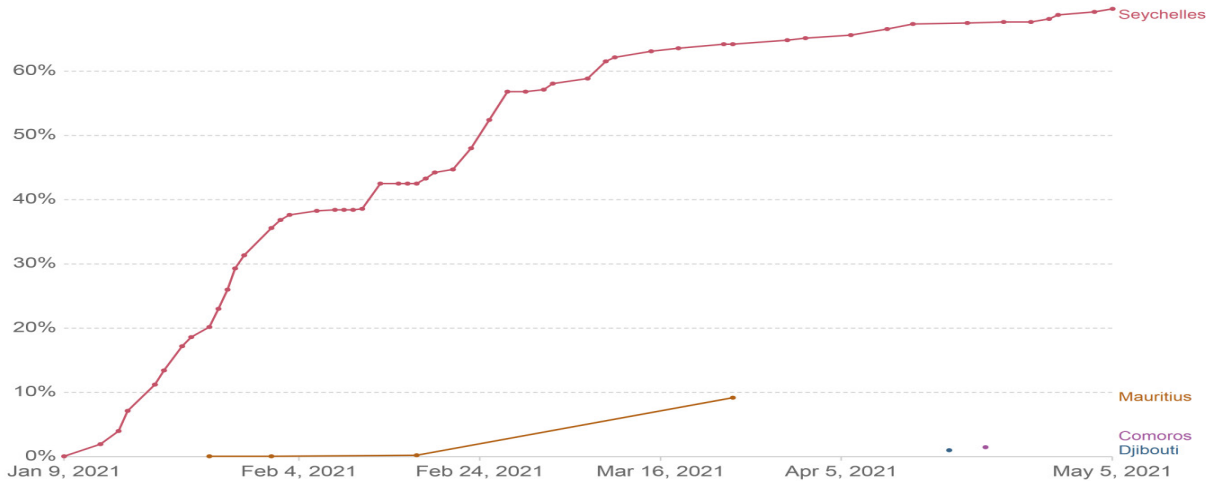
Vaccination efforts have also gained momentum. This is due to the fact that most countries in the region have received their first allocations through the COVAX (COVID-19 Vaccines Global Access) facility. As of 11th May 2021, 19 COMESA Member States (90.47%) with the exception of Burundi and Eritrea had received and rolled out COVID-19 vaccinations. The common vaccines being administered in the region include Oxford/AstraZeneca, Moderna, Pfizer/BionTech, Sinopharm, Johnson and Janssen (J&J), Sinovac and Sputnik V. Seychelles (with 75% of the population vaccinated), Mauritius (33.62%), Djibouti (16.20%) and Comoros (6.56%) are the ones leading in terms of percentage of population vaccinated, with Seychelles having achieved full dose vaccinations.

**Figure 1: COMESA Member States Leading in Vaccinations**

### Share of people who received at least one dose of COVID-19 vaccine

Share of the total population that received at least one vaccine dose. This may not equal the share that are fully vaccinated if the vaccine requires two doses.

Our World  
in Data



Source: Official data collated by Our World in Data

CC BY

Summary of Regional Figures as of 12th May 2021

Country	Total Cases	Total Tests	Total Cases/ 1M pop	Tests/ 1M pop	Total Recovered	Recovery Rate	Total Deaths	Deaths/ 1M pop	Active Cases
Burundi	4,208	279,132	345	22,894	773	18.37%	6	0.5	3,429
Comoros	3,860		4,359		3,688	95.54%	146	165	26
Djibouti	11,369	152,660	11,366	152,614	11,182	98.36%	151	151	36
DRC	30,392	152,999	331	1,665	26,434	86.98%	775	8	3,183
Egypt	239,740	2,715,258	2,306	26,112	178,241	74.35%	14,033	135	47,466
Eritrea	3,818	23,693	1,064	6,603	3,627	95.00%	12	3	179
Eswatini	18,487	194,247	15,795	165,957	17,784	96.20%	671	573	32
Ethiopia	263,672	2,628,952	2,246	22,394	212,567	80.62%	3,911	33	47,194
Kenya	163,976	1,725,546	2,993	31,498	113,057	68.95%	2,928	53	47,991
Libya	180,692	978,899	25,994	140,822	167,043	92.45%	3,077	443	10,572
Madagascar	39,351	192,894	1,391	6,816	36,633	93.09%	732	26	1,986
Malawi	34,183	236,897	1,748	12,117	32,170	94.11%	1,153	59	860
Mauritius	1,266	358,675	994	281,627	1,128	89.10%	17	13	121
Rwanda	25,773	1,350,982	1,949	102,145	24,333	94.41%	340	26	1,100
Seychelles	8,172	21,504	82,654	217,498	5,658	69.24%	28	283	2,486
Somalia	14,486	120,132	890	7,383	6,325	43.66%	753	46	7,408
Sudan	34,272	232,965	766	5,209	27,949	81.55%	2,446	55	3,877
Tunisia	322,998	1,371,995	27,087	115,055	281,554	87.17%	11,556	969	29,888
Uganda	42,427	1,044,170	903	22,230	41,971	98.93%	346	7	110
Zambia	92,152	1,448,213	4,896	76,940	90,539	98.25%	1,258	67	355
Zimbabwe	38,448	436,994	2,555	29,040	36,221	94.21%	1,579	105	648
AGGREGATES	1,573,742	15,666,807			1,318,877	83.81%	45,918		208,947

Source: World Health Organisation, Worldometer, Johns Hopkins University (compiled by COMWARN).



COMESA SECRETARIAT  
COMESA Center  
Ben Bella Road  
P.O. Box 30051



+260 211 229 725



[www.comesa.int](http://www.comesa.int)



[info@comesa.int](mailto:info@comesa.int)



[facebook.com/COMESA/](https://facebook.com/COMESA/)



[@twitter.com/comesa\\_lusaka](https://twitter.com/comesa_lusaka)