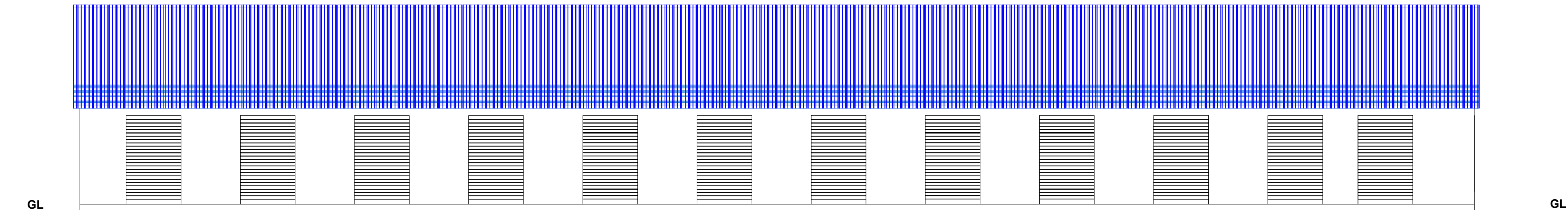
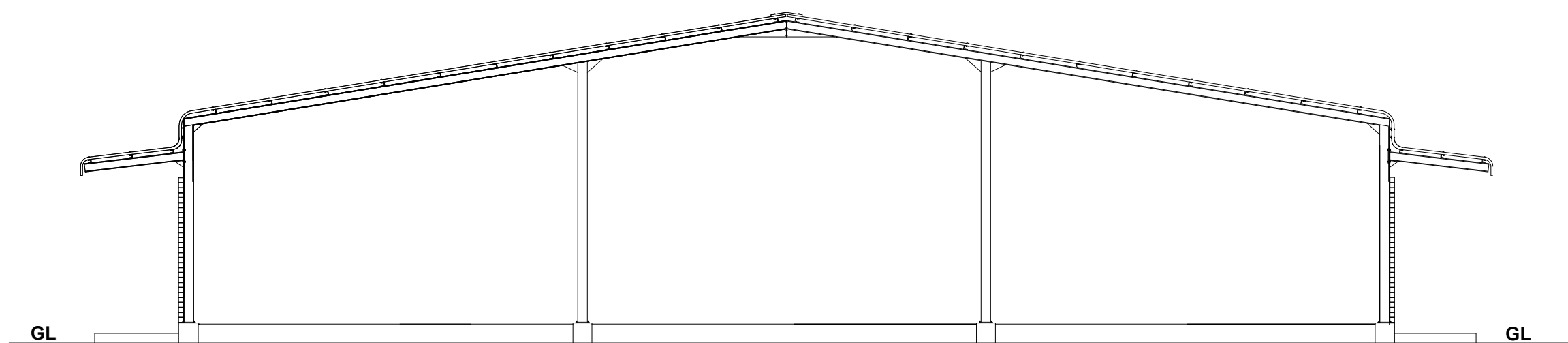


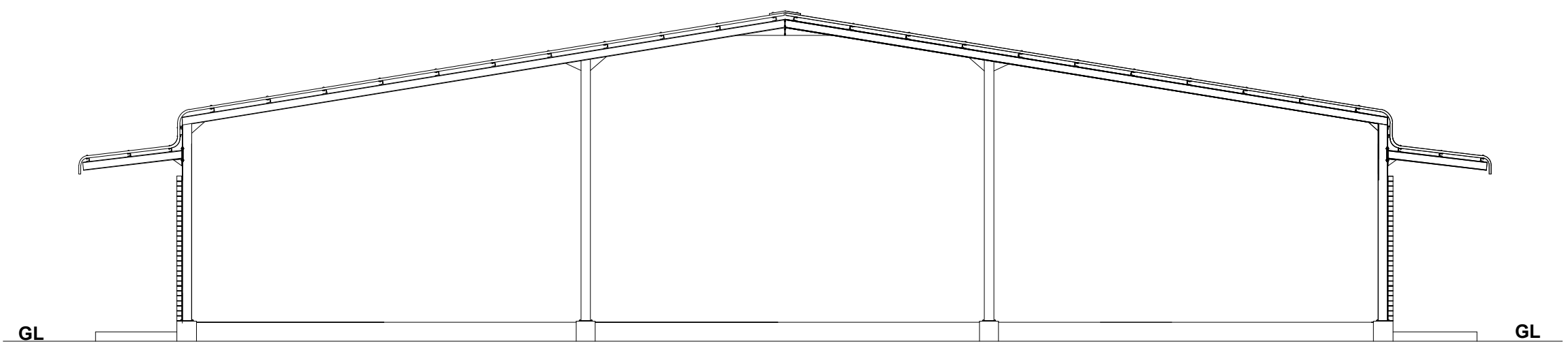
1:100



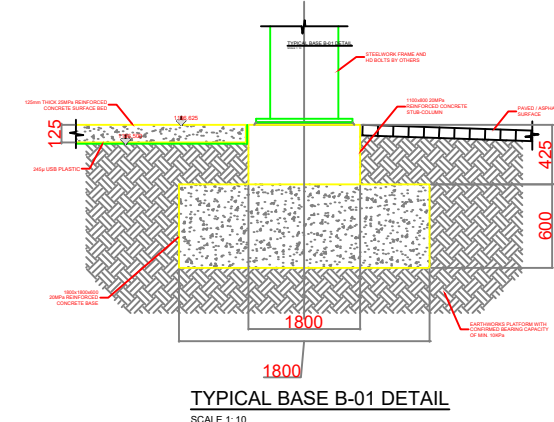
1:100



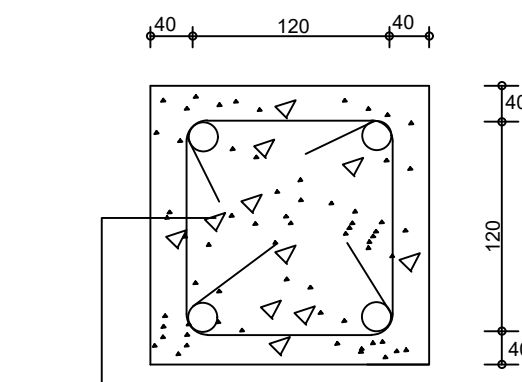
WEST ELEVATION



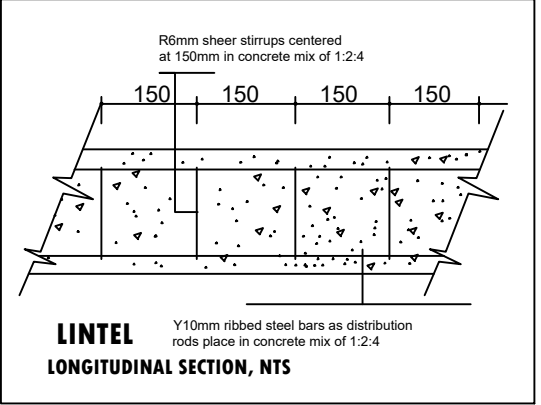
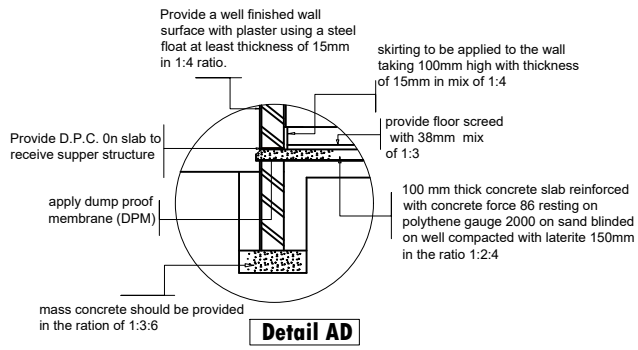
EAST ELEVATION 1:100



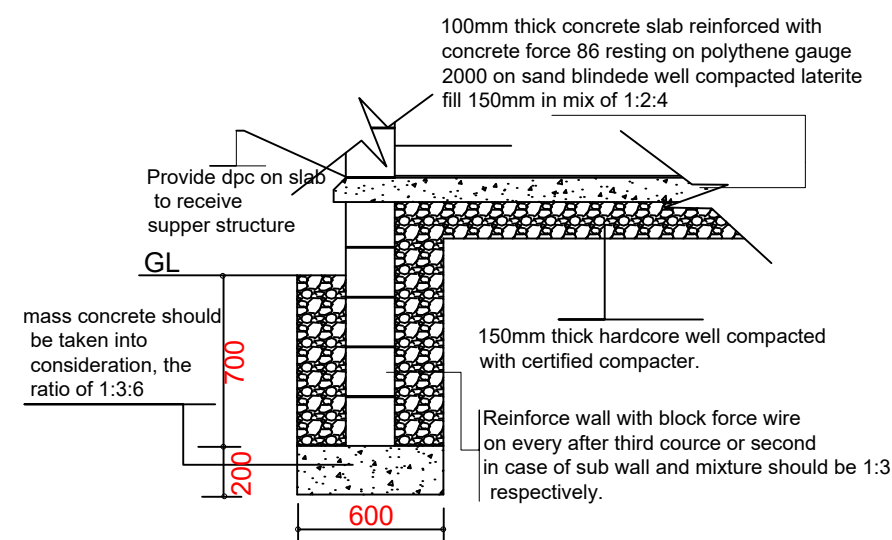
TYPICAL BASE B-01 DETAIL



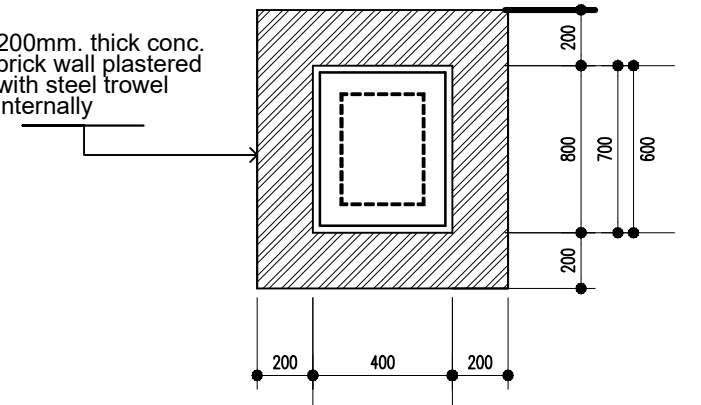
CROSS SECTION OF A LINTEL.  
not to scale.



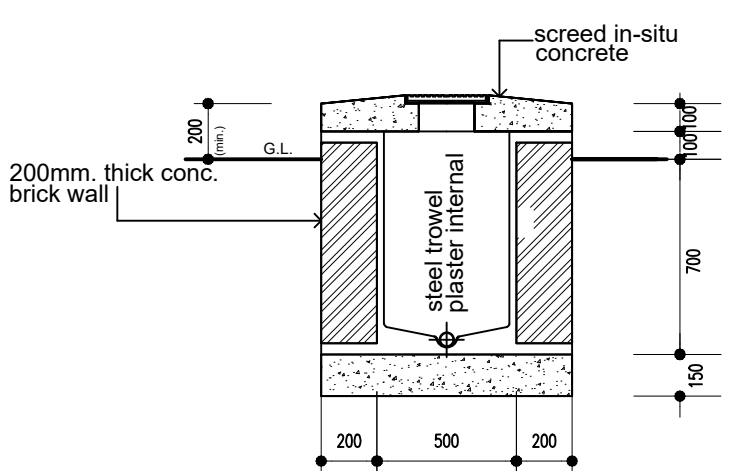
LINTEL  
LONGITUDINAL SECTION, NTS



STRIP FOUNDATION DETAIL. 1:20



PLAN OF MANHOLE  
SCALE 1:25



SECTION THROUGH MANHOLE  
SCALE 1:25

### H-SECTIONS

### LIPPED CHANNELS/GIRTS

### EQ - RSA

#### STEEL LEGEND

##### TRUSS/GIRDER MEMBER LEGEND:

TYPE	DESCRIPTION
a	100 x 100 x 10 RSA
b	90 x 90 x 8 RSA
c	80 x 80 x 8 RSA
d	70 x 70 x 6 RSA
e	60 x 60 x 6 RSA
f	50 x 50 x 5 RSA

##### OTHER ROOF STEEL

TYPE	DESCRIPTION
p/p1	125 x 65 x 20 x 2.5 C.F.L.C. PURLIN
cb	60 x 60 x 6 RSA
eb	60 x 60 x 6 RSA
fr	100 x 75 x 8 RSA
kb	50 x 50 x 5 RSA
sb	40 x 40 x 4 RSA
g	100 x 75 x 20 x 2.5 C.F.L.C. GIRT
lt	100 x 75 x 20 x 2.5 C.F.L.C.

#### CONCRETE LEGEND

##### FOUNDATION LEGEND:

TYPE	DESCRIPTION (Length x Width)
F 1	1400 x 1400 x 500mm DEEP
F 2	2000 x 2000 x 800mm DEEP
F 3	2500 x 2500 x 1000mm DEEP

##### CONCRETE COLUMN LEGEND

TYPE	DESCRIPTION
C1	230 x 230mm
C3	230 x 345mm
C3	230 x 460mm
C4	345 x 345mm
C5	250 Ø

#### STEEL COLUMN LEGEND

TYPE	DESCRIPTION
SC1	203x203x46 kg/m I-SECTION
SC2	127x146x18.6 T-PIES CUT FROM 254x146x37 kg/m I-SECTION
SC3	219 Ø x 6.0 mm C.H.S.

#### MEZZANINE/RAFTER LEGEND

TYPE	DESCRIPTION
MB1	406 x 140 x 46 kg/m

#### BRICKWORK NOTES

- Setting out of all brickwork to be done in accordance with architect's drawings.
- All bricks in load bearing brickwork to have a minimum crushing strength of 140N/mm<sup>2</sup>.
- All bricks to have a water absorption of less than 12%.
- Bricks shall be laid in a standard bond and must be flush-jointed except for face bricks, which can require half-bonded or other joints according to the architect's specification (Darker mortar notes).
- Load bearing walls to receive a render course below the slab.
- Load bearing walls to be properly bonded to one another.
- Ensure that all cross-joints in successive courses are staggered and that walls are properly bonded to one another.
- to joints, to cross walls and in the corners.
- Prepared in all walls to be fully filled with mortar.
- The bricks thoroughly before laying (Dry bricks only).
- Concrete bricks will only be allowed with prior approval and additional specifications by the engineer.
- Wall ties for cavity walls, metal wall ties, vertical metal ties (SABS 2144) or similar approved, at maximum spacing of 600mm and every 4th course. Ensure each tie is embedded to a depth of at least 60mm into mortar joints of each leaf.

### SHAPE CODES SCHEDULE

#### NOTES

#### SHAPE CODES 20 to 36

#### SHAPE CODES 37 to 56